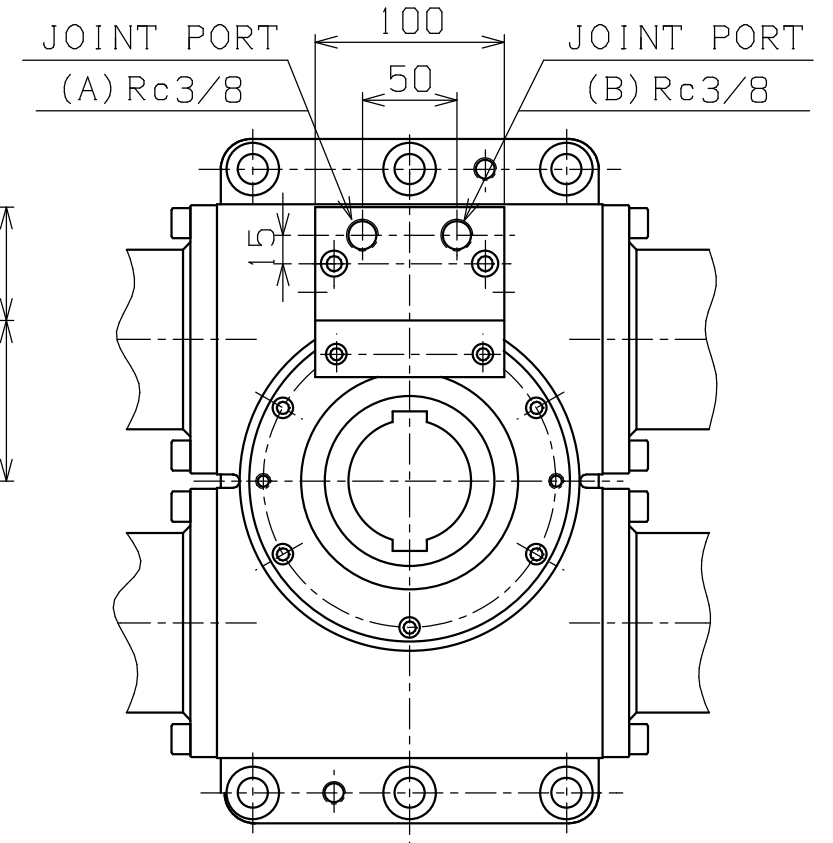
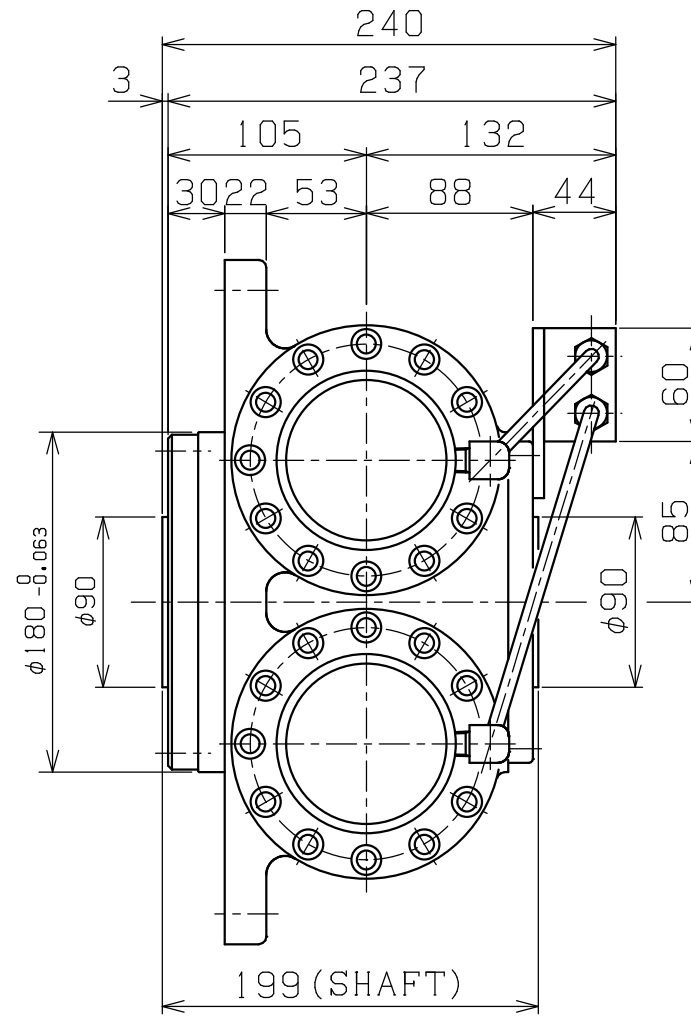
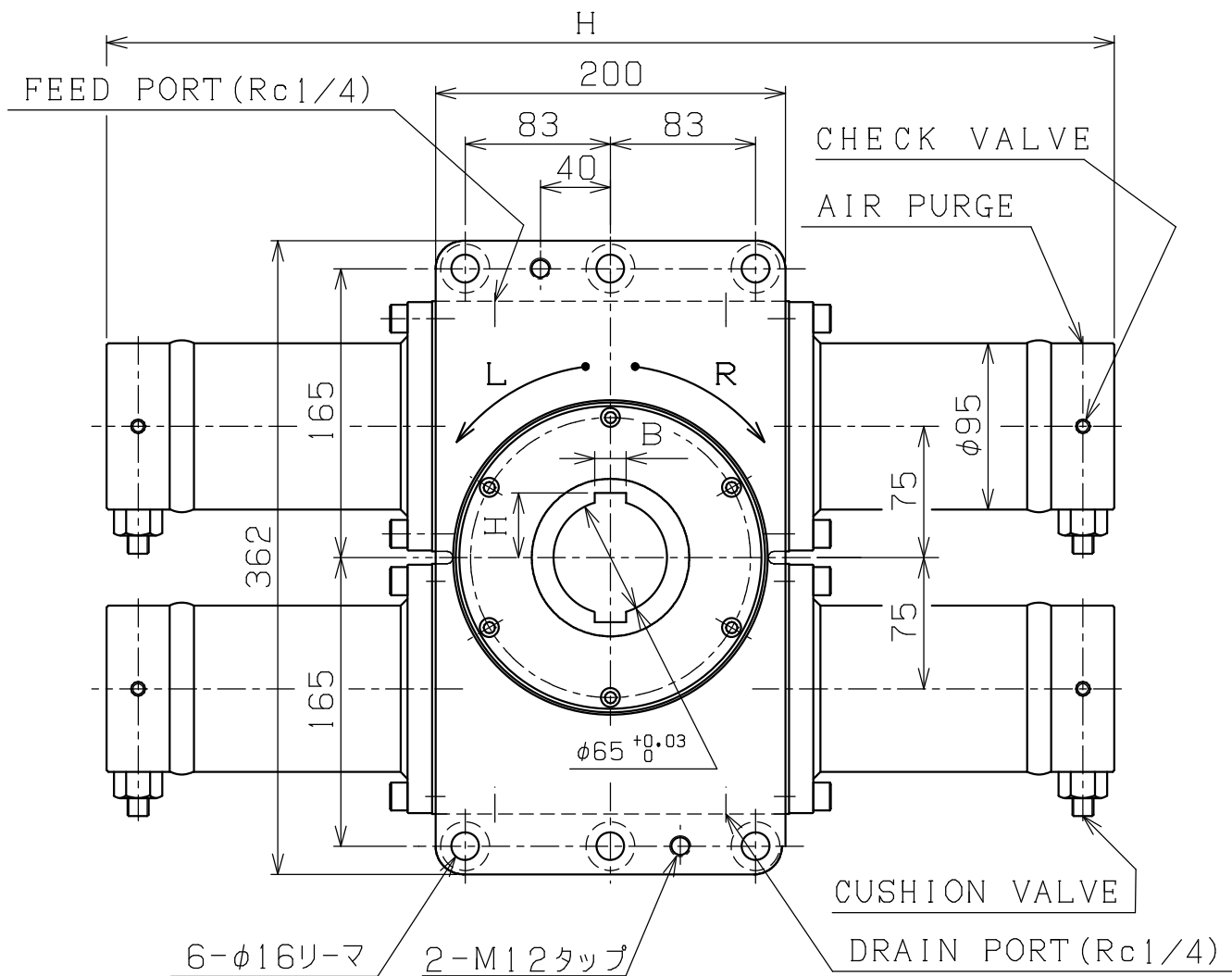


A3-0185A

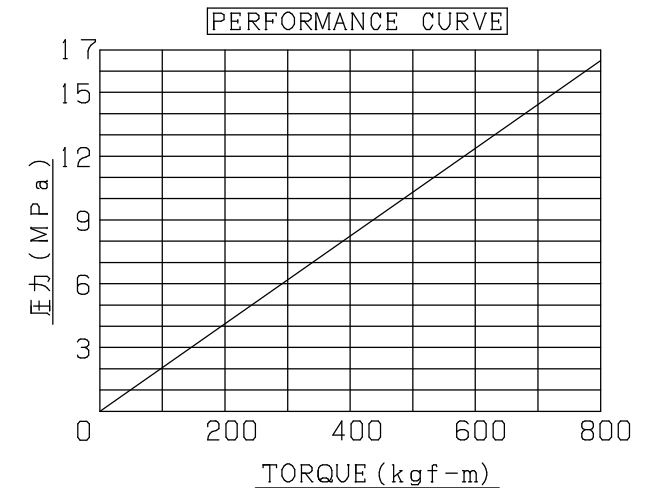
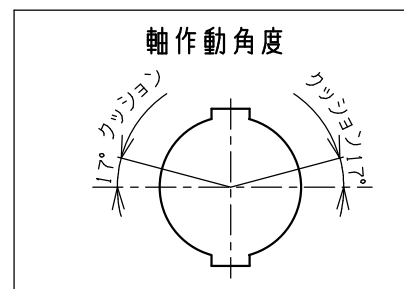


SPECIFICATION	
TEST PRESSURE	24.3 MPa
MAX. WORKING PRESS.	16.2 MPa
MAX. TORQUE	7.84 kN-m
CYL. OIL QUANTITY	0.01L at 1°
CASING OIL CAPAC.	1.3L (460#)
WEIGHT (ABOUT)	100kgG
WORKING FLUID	MINERAL OIL
PAINT COLOR	STOP RUSTING
RADIAL LOAD	31.5 kN
THRUST LOAD	18 kN

JIS	B	H
新JIS	18±0.0215	36.9±0.2
旧JIS		

回転角	L 全長
90	501
120	567
180	699
270	897
360	1095

$L = 303 + (\text{回転角} \times 2.2)$



this drawing position of the key way it shows starting rotation

基本仕上	MARK	PARTICULAR	QUAN	MATERIAL	SIZE	WEIGHT	REMARK
寸法許容差	C H I E F		AW-T0.8H-※				
区分	許容差	H E A D		ROTARY ACTUATOR			
1~4	±0.1	CHECKED BY		DRAWING NO. A3-0185A			
5~16	±0.2	DRAWN BY					
17~63	±0.3	DATE DRAWN					
64~250	±0.5	SCALE 1/4		SAEKI ENGINEERING Co., LTD.			
250~1000	±0.8						