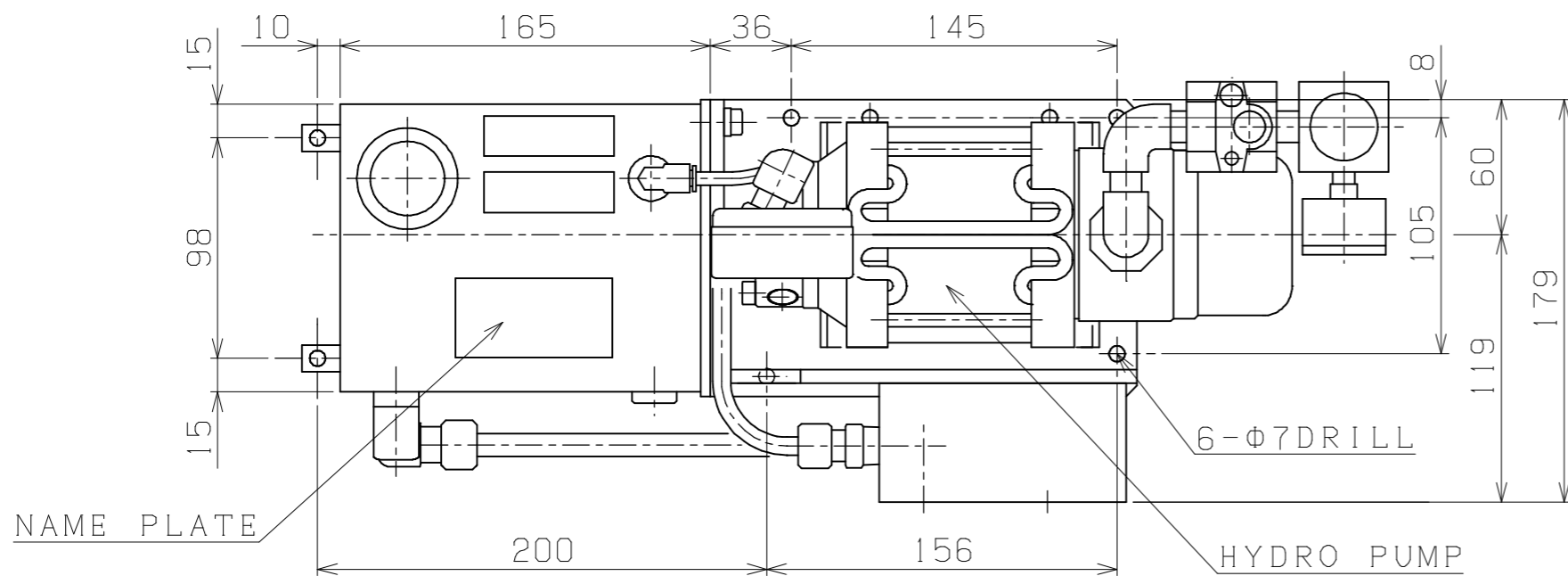
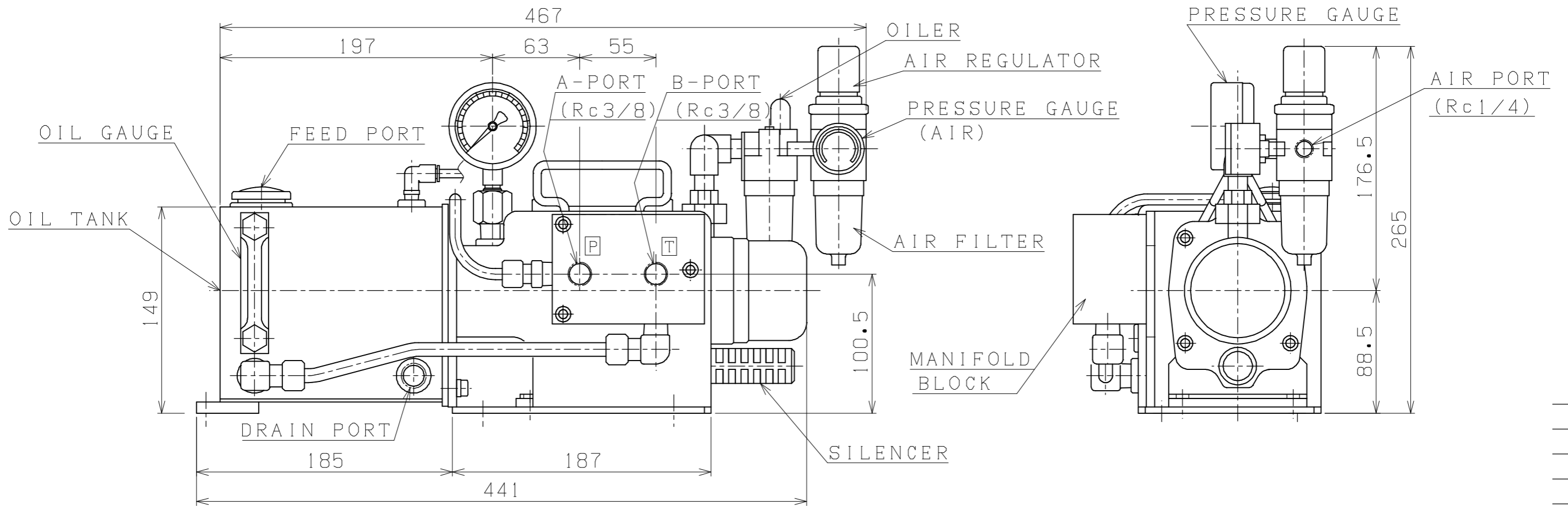


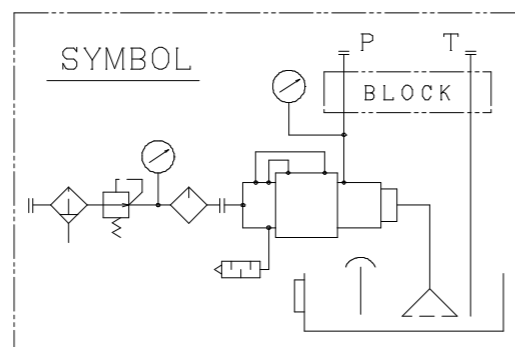
A3-1585L



SPECIFICATION	
MAX. PRESSURE (OIL)	40 MPa (400kgf/cm ²)
MAX. PRESSURE (AIR)	0.8 MPa (8.0kgf/cm ²)
AIR CAPACITY	1.2m ³ /min.
INCREASING RATIO	1:50
DISCHARGE	HYDRO PUMP PERF. CURVE
WORKING FLUID	ISO VG15~46
TANK CAPACITY	MAX.=2.4L EFFECTIVE=1.5L
WEIGHT (APPROX)	14 kg G



G2-1・MHPUユニット・外・2L・MHP50



PLAN RECORD	基本仕上	MARK	PARTICULAR	QUAN	MATERIAL	SIZE	WEIGHT	REMARK
	寸法許容差	C H I E F			MHPU50-N2L			
	区分許容差	H E A D						
	1 ~ 4 ±0.1	CHECKED BY			HYDRO PUMP UNIT			
	5 ~ 16 ±0.2	DRAWN BY						
	17 ~ 63 ±0.3	DATE DRAWN			DRAWING NO.	A3-1585L		
	64 ~ 250 ±0.5	SCALE 1/3			SAEKI ENGINEERING Co., LTD.			
	250~1000 ±0.8							

記号
400S
100S
25S
6.3S
0.8S