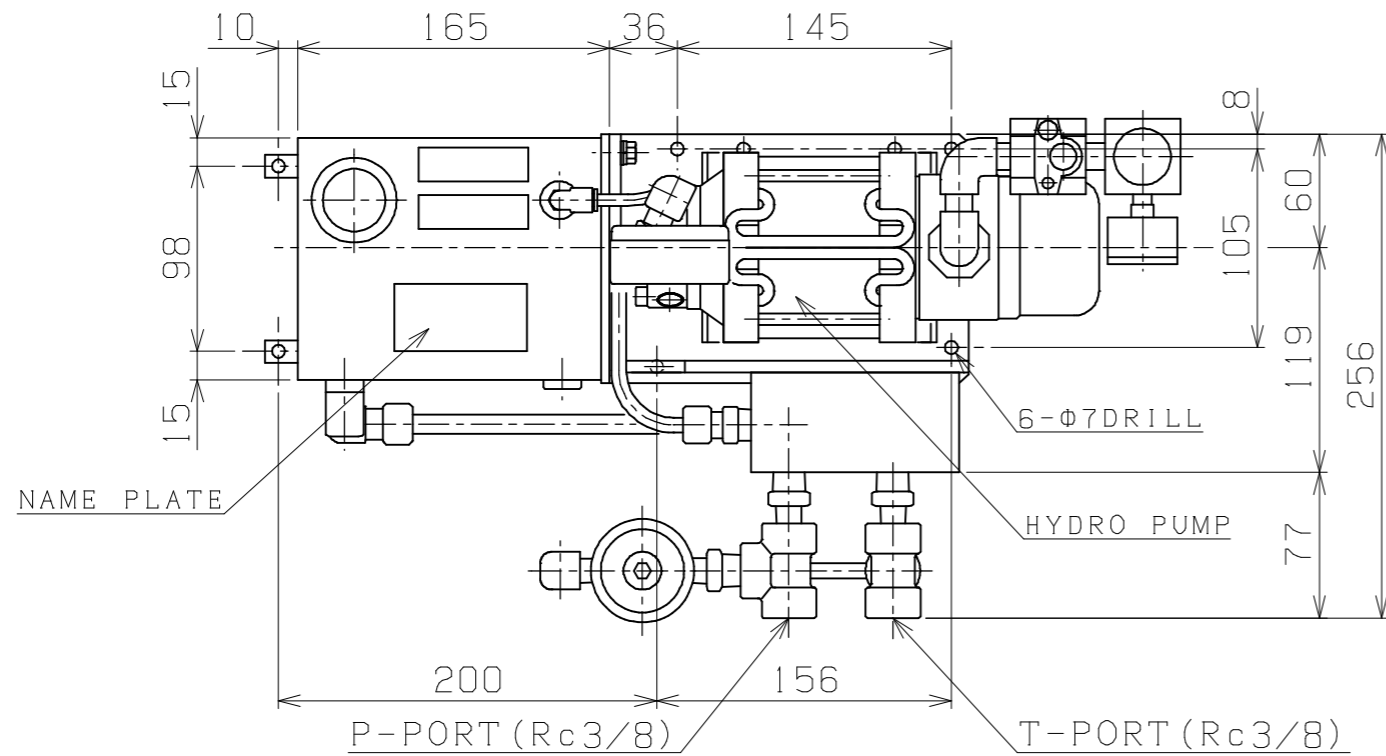
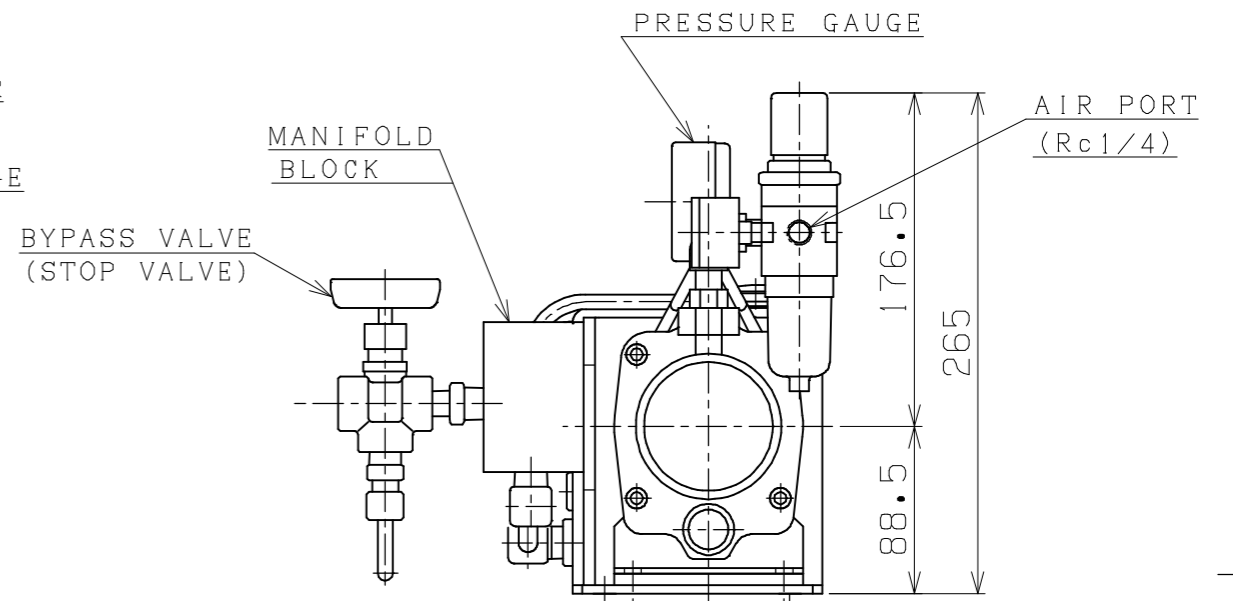
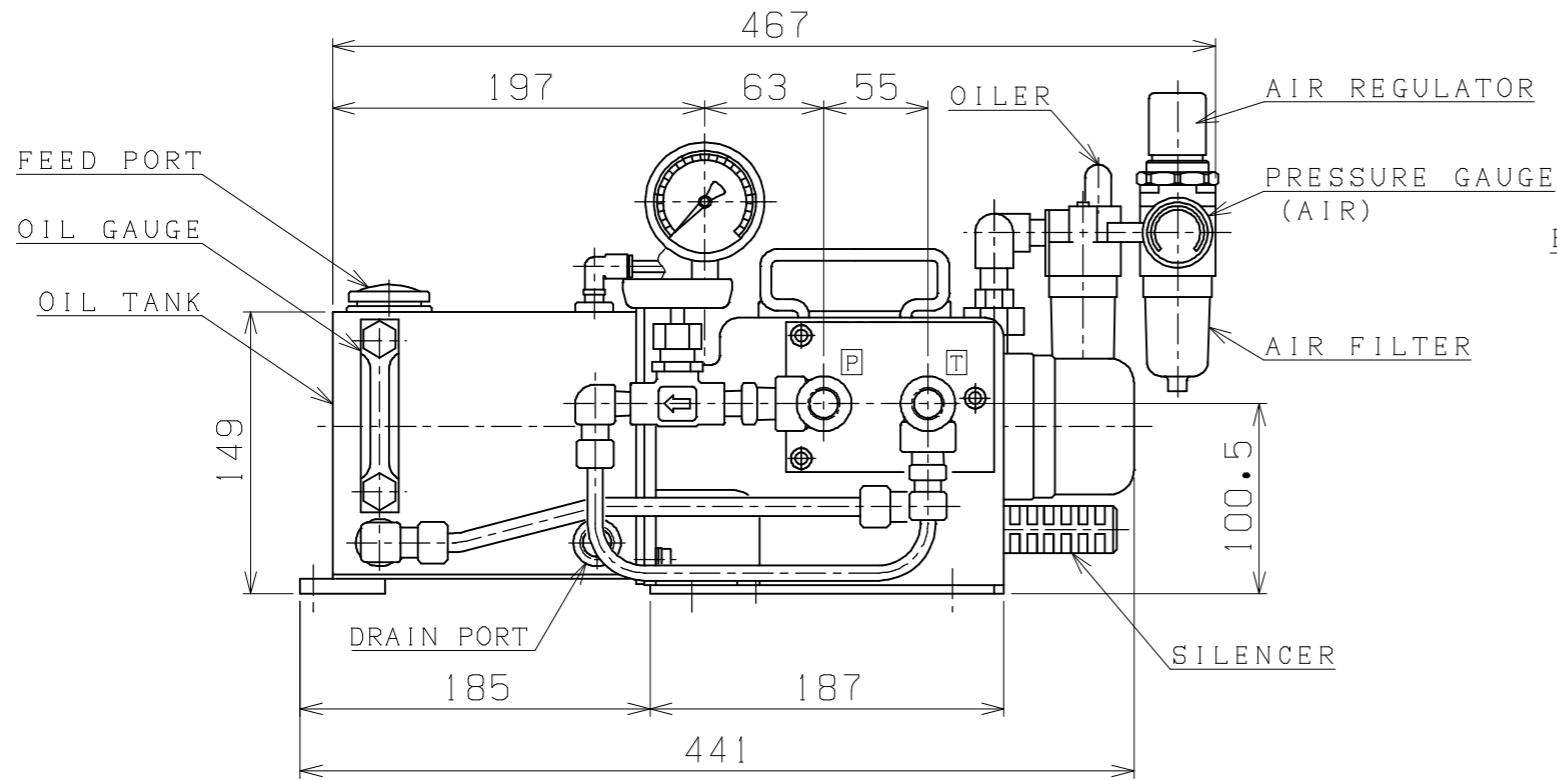


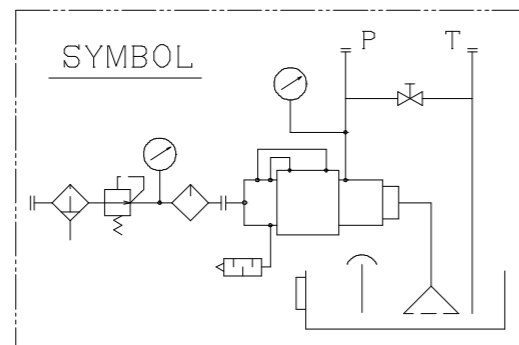
A 3 - 1 5 8 5 N



SPECIFICATION	
MAX. PRESSURE (OIL)	40 MPa (400kgf/cm <sup>2</sup> )
MAX. PRESSURE (AIR)	0.8 MPa (8.0kgf/cm <sup>2</sup> )
AIR CAPACITY	1.2m <sup>3</sup> /min.
INCREASING RATIO	1:50
DISCHARGE	HYDRO PUMP PERF. CURVE
WORKING FLUID	ISO VG15~46
TANK CAPACITY	MAX.=2.4L EFFECTIVE=1.5L
WEIGHT (APPROX)	14kg



G2-1・MHPUユニット・外・2L・MHP50



PLAN RECORD	基本仕上	MARK	PARTICULAR	QUAN	MATERIAL	SIZE	WEIGHT	REMARK
	寸法許容差	C H I E F			MHPU50-B2L			
	区分	H E A D			HYDRO PUMP UNIT			
	1 ~ 4 ±0.1	CHECKED BY			DRAWING NO. A3-1585N			
	5 ~ 16 ±0.2	DRAWN BY						
	17 ~ 63 ±0.3	DATE DRAWN						
	64 ~ 250 ±0.5	SCALE 1/4			SAEKI ENGINEERING Co., LTD.			
	250~1000 ±0.8							

記号  
400S  
100S  
25S  
6.3S  
0.8S