

A3-0048J

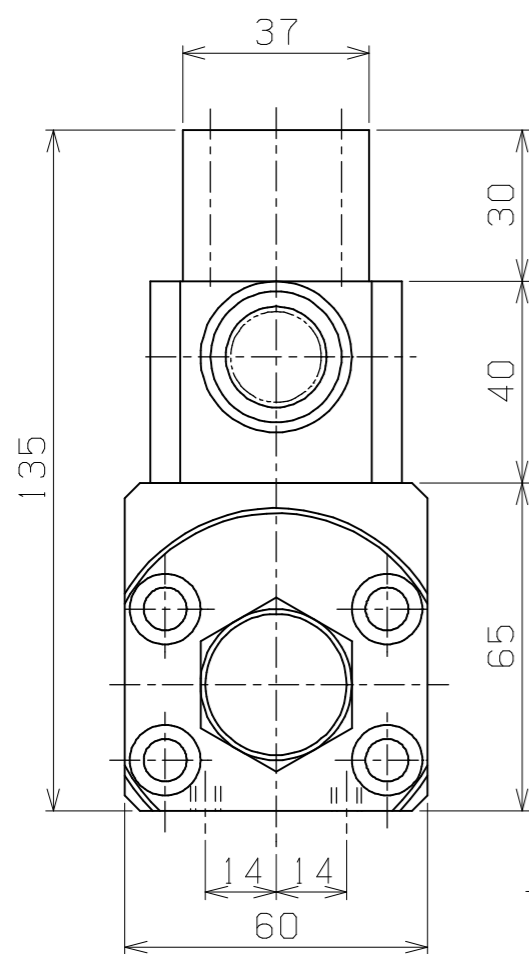
PRIMARY OIL PRESSURE  
T-PORT (Rc3/8)

WATER SUCTION  
SC-PORT (Rc1/4)

PRIMARY OIL PRESSURE  
P-PORT (Rc1/4)

SECONDARY WATER  
PRESSURE PH-PORT (Rc1/4)

SECONDARY CYLINDER



JOINT BLOCK

235

100.5

134.5

AUTOMATIC VALVE

PRIMARY CYLINDER

65

25

L

16

43

85

90

4-M6TAPX8L

DRAIN PORT (Rc1/4)

9

DR

64

MECHANICAL VALVE

S P E C	
MAX. PRIMARY PRESS.	8.5 MPa
MAX. PRIMARY INFLOW	20 L/min.
MAX. SECONDARY PRESS.	50 MPa
MAX. SECONDARY INFLOW	3 L/min.
PRESSURE RATIO	1 : 6
WEIGHT (ABOUT)	7.5 kgG

PLAN RECORD	基本仕上	MARK	PARTICULAR	QUAN	MATERIAL	SIZE	WEIGHT	REMARK
	寸法許容差	C H I E F		SWB6-5Z-01				
	区分	H E A D		HYDRAULIC BOOSTER PUMP				
	1 ~ 4	±0.1		DRAWING NO.		A3-0048J		
	5 ~ 16	±0.2		SAEKI ENGINEERING Co., LTD.				
	17 ~ 63	±0.3		SCALE 1/1.5				
	64 ~ 250	±0.5						
	250~1000	±0.8						

記号  
400S  
100S  
25S  
6.3S  
0.8S